

TIMBERLINE SERIES
60 X 37 COLLECTION



THE PINE CREEK

By Joseph Edward

2580 SQUARE FEET, ONE STORY
3 BEDROOMS, 3½ BATHS

TIMBERLINE COLLECTION

Whether you are looking for a lakeside cottage, a gracious lodge-style resort home, or a small mountain cabin, the Details' Timberline Collection brings authentic architecture and detailing such as cedar siding, beam and timber details, crafted stone-work, and hand-scraped wood floors to your dream home.

ABOVE CODE PERFORMANCE

- ① Structurally Insulated Panels (SIP) for up to a 50% increase in whole-wall R value
- ② Open-cell spray foam insulation is green and energy efficient
- ③ Tankless water heaters save up to 30% on heating
- ④ Manabloc and PEX plumbing systems reduce water and energy usage

THE RESULTS

Significant monthly energy cost savings
Designed for LEED certification

DETAILS
THE NO UPGRADE HOME

LIVING/GREAT ROOM

- Authentic hand-scraped wood flooring
- Solid Wood Cased windows
- Tongue and groove wainscoting
- Custom finished beam work
- Built-in bookshelves and entertainment centers
- Nine foot ceilings with seven-foot doors

BATH/UTILITY

- Slab marble counter tops
- Custom 12"x12" ceramic tile flooring
- Kohler coordinating bath fixtures

KITCHEN

- Authentic Hardwood cabinetry with available inset doors
- Slab granite countertops with 6" backsplash in kitchen
- Under mount sink standard
- GE Monogram Stainless Steel appliances
- 30" Kohler dual-basin, stainless sink with coordinating Kohler faucet

EXTERIOR

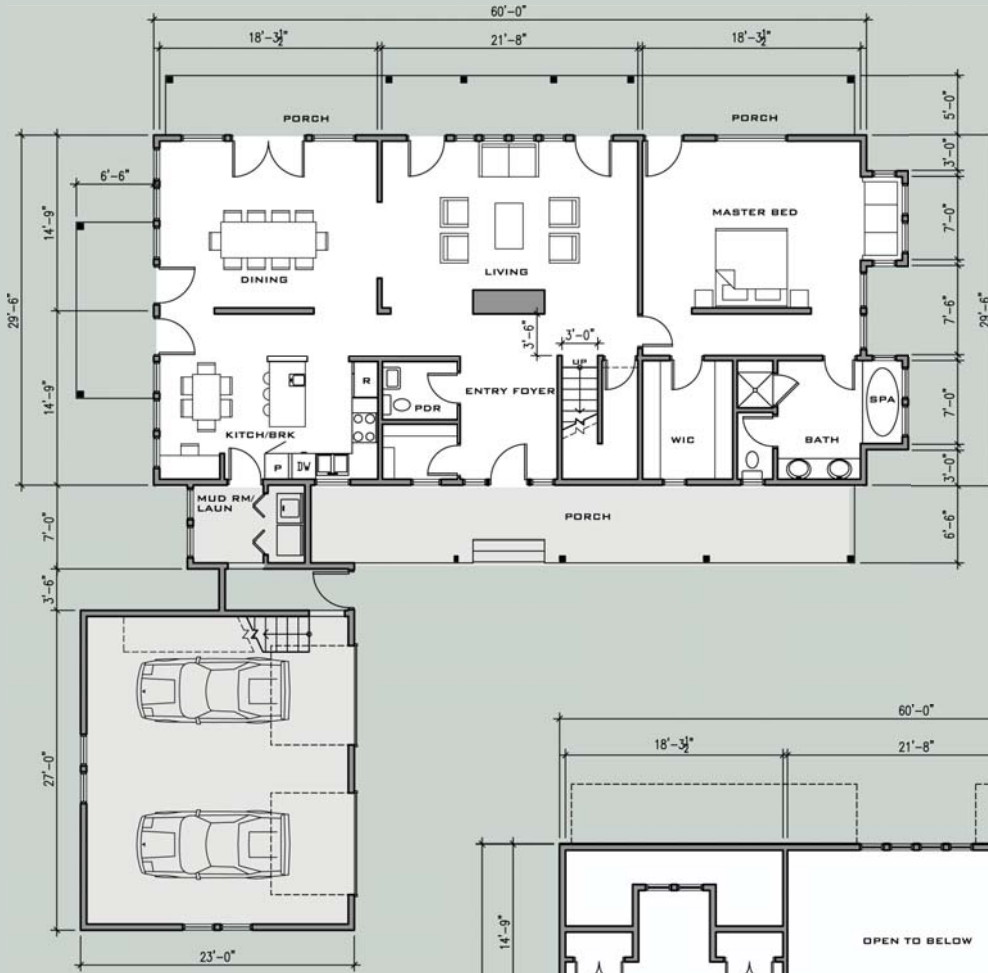
- Continental and American inspired exteriors with authentic detailing
- Andersen solid wood, aluminum exterior windows
- Inviting front porch with Hardwood decking

SYSTEMS

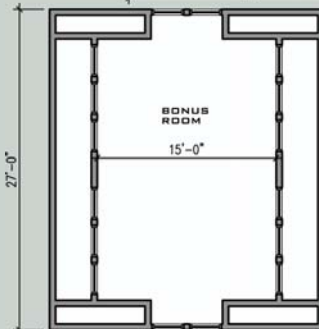
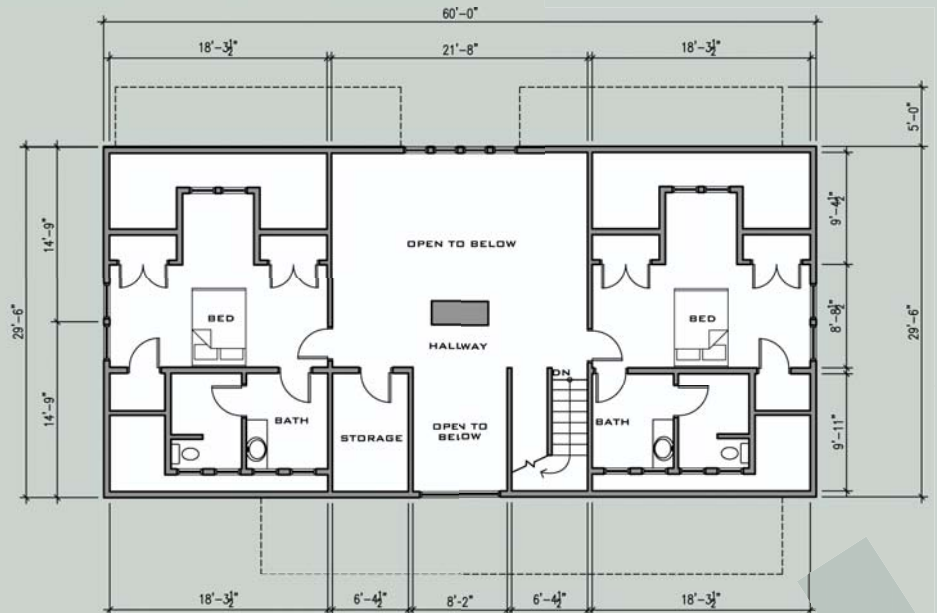
- High Efficiency 90% AFUE Gas Furnace
- Dual-zone HVAC system for comfort and energy efficiency
- Rinnai tankless hot water heaters
- Integrated multi-media prep system

ALL SPECIFICATIONS VARY PER PLAN AND ARE SUBJECT TO CHANGE

MAIN FLOOR



UPPER FLOOR



THE LAYOUT

PLAN P { 2580 SQUARE FEET
ONE STORY
3 BEDROOMS
3.5 BATHS
60 X 37 COLLECTION

From design to construction, the Details home has been planned to provide energy efficiency, conserve natural resources, and create a healthy environment for its owners.

