

DETAILS FINE HOMES SERIES  
40 X 44 COLLECTION



THE ASHTON

1344 SQUARE FEET, ONE STORY  
2 BEDROOMS, 2 BATHS

FINE HOMES

Designed in collaboration with Garnett Design Group, Details' Fine Homes collection features classic architecture in a variety of traditional American styles including Cape Cod and neo-Colonial. With homes ranging from 1300 s.f. to over 3400 s.f., the collection features a timeless look and detailing that stands out in any setting.

ABOVE CODE PERFORMANCE

- ① Structurally Insulated Panels (SIP) for up to a 50% increase in whole-wall R value
- ② Open-cell spray foam insulation is green and energy efficient
- ③ Tankless water heaters save up to 30% on heating
- ④ Manabloc and PEX plumbing systems reduce water and energy usage

THE RESULTS

Significant  
monthly energy  
cost savings

Designed for  
LEED  
certification

DETAILS  
THE NO UPGRADE HOME

LIVING/GREAT ROOM

- Authentic hand-scraped wood flooring
- Solid Wood Cased windows
- Tongue and groove wainscoting
- Custom finished beam work
- Built-in bookshelves and entertainment centers
- Nine foot ceilings with seven-foot doors

BATH/UTILITY

- Slab marble counter tops
- Custom 12"x12" ceramic tile flooring
- Kohler coordinating bath fixtures

KITCHEN

- Authentic Hardwood cabinetry with available inset doors
- Slab granite countertops with 6" backsplash in kitchen
- Under mount sink standard
- GE Monogram Stainless Steel appliances
- 30" Kohler dual-basin, stainless sink with coordinating Kohler faucet

EXTERIOR

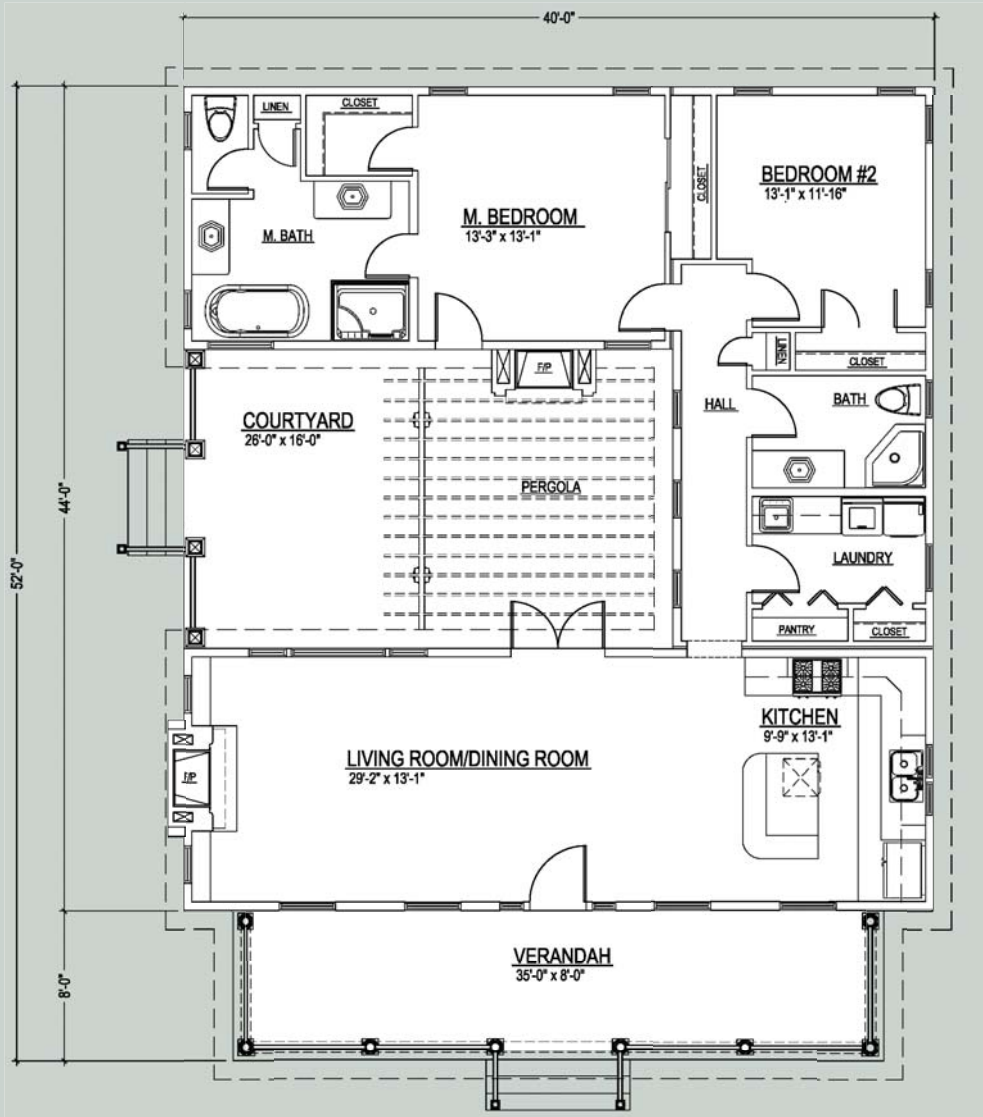
- Continental and American inspired exteriors with authentic detailing
- Andersen solid wood, aluminum exterior windows
- Inviting front porch with Hardwood decking

SYSTEMS

- High Efficiency 90% AFUE Gas Furnace
- Dual-zone HVAC system for comfort and energy efficiency
- Rinnai tankless hot water heaters
- Integrated multi-media prep system

ALL SPECIFICATIONS VARY PER PLAN AND ARE SUBJECT TO CHANGE

## MAIN FLOOR



## THE LAYOUT

PLAN

A

1344 SQUARE FEET  
ONE STORY  
2 BEDROOMS  
2 BATHS

40 X 44 COLLECTION

From design to construction, the Details home has been planned to provide energy efficiency, conserve natural resources, and create a healthy environment for its owners.

